

# Smooth Operator

## Relaxing retreat balances the needs of its family's busy lives

By Lara Hollenczer ■ Photos by Steve Buchanan

Any working couple with young children knows that it is all about balance. For one McLean family that same sense of balance came into play when they remodeled their aging master bathroom. A space that was beautiful in the late 1970s was in dire need of a facelift that included much more than just the overall upgrades. And, to accomplish the task of making the room more functional and attractive proved that concepts that at first seem to contradict, can work well together.

*continued >*

july/august 2007 | dc | housetrends 45



TERRANOVA  
design & remodel



### Creative meets logic

Designer Marcelo Dobrauchi of Terranova Construction undertook the task of incorporating the couple's vision with his own for the space. Dobrauchi's creativity and the couple's, both of whom are engineers, focus on the functioning side of the design, as well as their own ideas about color schemes presented many challenges but also great opportunity.

The homeowners note that this was probably a demanding project for Dobrauchi. The husband explained that they both are the type of people who like to see all the options which translated into careful planning and an inch-high stack of sketches to ensure that the placement of each element was perfect. In the end, the homeowners had an even greater appreciation for the process and the work, and ended up with a master bathroom that not only meets all of their needs but is also a gorgeous space.

### Traditional and contemporary

The husband grew up in a traditional Colonial, while his wife's style is a bit more contemporary. "We needed to have the right feel and the result reflects our personalities," he says. Throughout the process their individual styles were always evident in the background as parts came together to create the whole.

Dobrauchi describes the final product as an exciting space that carefully mixes a contemporary feel with clean horizontal lines and traditional features, namely in the stately arched windows and welcoming window seat as well as the rich vanity cabinetry with the more modern recessed lighting and classic fixtures.

### Family-friendly yet soothing

One of the original goals was to give Mom a tranquil place to relax. The large arched window enhances the view into the privacy of

*continued >*

OVERLEAF: The large, arched window above the inviting tub offers views of the family's secluded back yard. ABOVE: The Kohler Bubble Massage bathtub features chromatherapy and boasts a dark blue granite tub surround. RIGHT: Wood cabinetry with a rich chestnut finish surrounds the double vanity, adding a traditional touch to the contemporary bathroom.

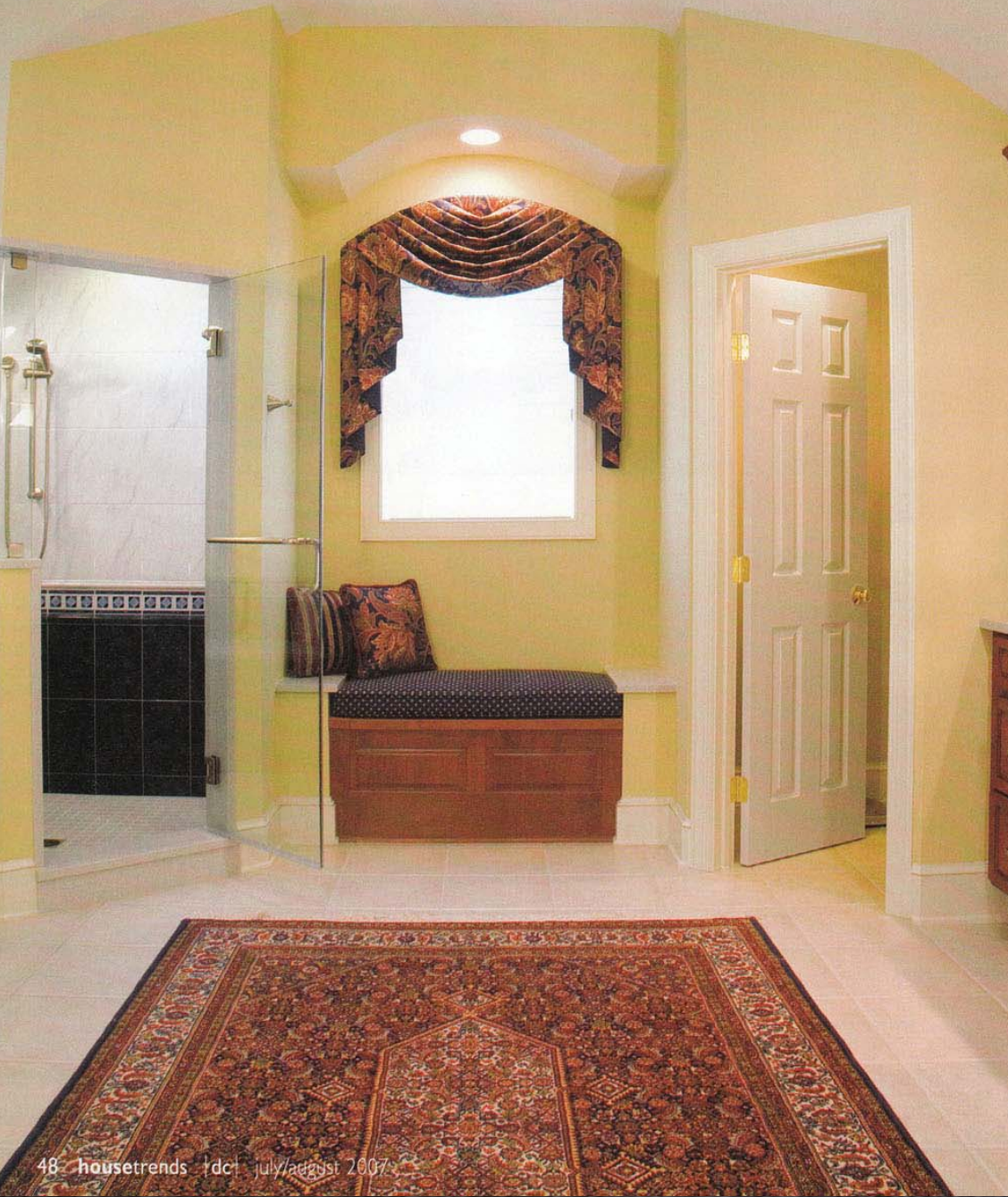




july/august 2007 | dc | housetrends 47



TERRANOVA  
design & remodel



48 housetrends | dc | july/august 2007



TERRANOVA  
design & remodel

TERRANOVA



the family's back yard. However, the Kohler Bubble Massage deep soaking tub has an additional benefit: chromatherapy. As Dobrauchi explains, our senses react to color and when immersed in color we can relax in a different way, adding to the enjoyable experience. Both the mind and body are soothed as a full spectrum of color and bubbles from the air jets work their magic.

But, this tub is not only a pleasant treat for Mom. In fact, the children have rarely used their own bathroom since the project was completed and have essentially moved into the master bathroom with a particular fondness for the colorful tub.

#### Rich accents

The use of color goes well beyond the chromatherapy bath. The warmth from the buttery walls and rich cabinetry are accented

by a very lively color scheme. The once leaky shower was transformed into the best possible experience with plenty of room, multiple showerheads and stunning blue tile that the family just fell in love with it. Interior designer Tina Doyle not only created window treatments that complemented the arches, but also the hues that add even more character to the room. The floor covering brought in at the end of the project enhances the traditional aspects of the room and draws on the vibrancy of the rich accents.

#### Spacious efficiency

"For us the real benefit was getting space laid out more effectively," the homeowners say. The original bathroom was nearly the size of the master bedroom itself. However, to more efficiently

*continued >*

OPPOSITE: A comfortable window seat rests beneath the dramatic Cathedral ceiling. ABOVE LEFT: The bold, blue tile in the oversized shower complements the tub surround and elegant drapery. ABOVE RIGHT: Multiple showerheads and a convenient bench create a spa-like experience right at home.



july/august 2007 | dc | **housetrends** 49



**TERRANOVA**  
design & remodel

TERRANOVA



utilize the space, Dobrauchi took some of the bathroom and created a nearby sitting area and walk in closets, enhancing the master bedroom and providing more room for a busy family. Still, with plenty of room, the area also boasts Cathedral ceilings and natural lighting which gives the space a natural and airy feel.

"Now that it's done, we have a space that is very useable, very comfortable and decorated as we like it," the homeowners add.

### Simply splendid

Fitting with the couple's desire to have a functional master bath that is not too elaborate, this space has all the amenities of a lavish room without overdoing it. Situated over the garage, the room was always too hot or too cold. To remedy this, a new heating zone was added as well as additional hidden touches including a heated floor and towel warmers.

In the end, a room that smartly combines traditional and contemporary styles, bold and warm colors, and function and beauty. This family has a perfect sense of balance. 🍷

## RESOURCES

**Designer:**

Marcello Dobrauchi

**Contractor:**

Terranova Construction,  
Kitchen and Bath

**Cabinetry:**

Legacy Alderwood with  
Chestnut finish, Bertch

**Flooring:**

Daltile

**Tub:**

Kohler Memoirs 72-inch  
Bubble Massage

**Countertops:**

Zodiac Borealis Blue (tub  
deck); Silestone Stellar Snow  
(vanity top)

**Sinks:**

Kohler

**Faucets:**

Danze

**Lighting:**

Avery Collection, Burgess  
Lighting

**Windows:**

CertainTeed

**Window treatment:**

Tina Doyle Interiors

**Steam shower:**

Mr. Steam

**Floor heater:**

WarmTiles

ABOVE: Matching Kohler undermount sinks and brushed nickel Danze faucets complete the overall design.

